

ESOL Funding Workshop
10:30 start
15:30 finish

SLIDES WILL BE EMAILED AFTER THE WORKSHOP

Lsect
Learning & skills ~ events,
consultancy and training



Agenda

10.35 Full overview of the new qualifications, funding rate changes and ILR recording

11.50 Break for refreshments


12.10 Curriculum planning and funding implications for ESOL providers

13.00 Break for lunch

13.50 Top tips for ESOL when using the SFA catalogue, LARS, FIS, HUB and DSATS

14:30 Q&A clinic with the Awarding Organisations, chaired by Nick Linford
Paul Sceeny, City and Guilds
Henry Tolley, Trinity
Dawn Smith, Ascentis
Lee Knapp, Cambridge Assessment
Helen Georgiou, NOCN
Rebecca Brackley, Pearson/Edexcel

15.30 Workshop end

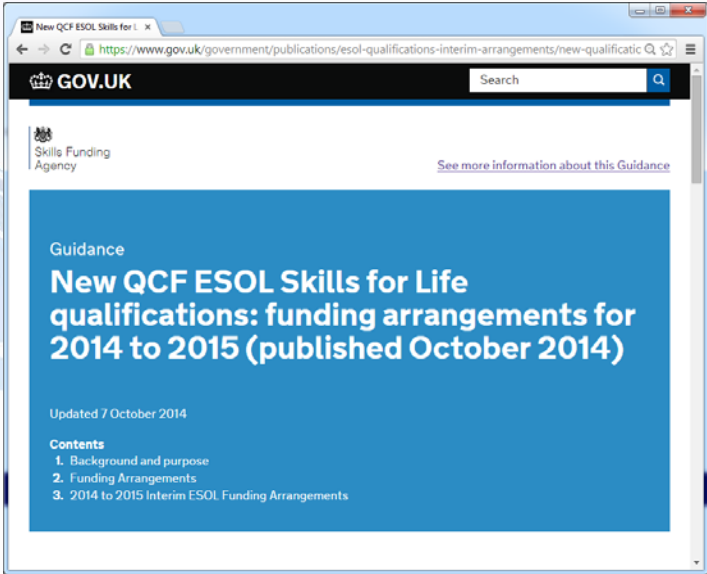


Full overview of the ESOL qualification and funding rate changes



Lsect
Learning & skills ~ events,
consultancy and training

SFA funding arrangements for this year



Official link:
<https://www.gov.uk/government/publications/esol-qualifications-interim-arrangements/new-qualifications-and-credit-framework-english-for-speakers-of-other-languages-skills-for-life-qualifications-funding-arrangements-for-2014-to-2015#contents>

Or tinurl:
<http://tinyurl.com/lwpevxx>

1. Background and purpose

<http://tinyurl.com/lwpevxv>

1. In May 2014 we issued a note setting out interim funding arrangements, up to 31 December 2014, for the current suite of English for Speakers of Other Languages (ESOL) qualifications [£300 for one unit and £724 for full certificate]. Since that time the Office of Qualifications and Examinations Regulation (Ofqual) has accredited new Qualifications and Credit Framework (QCF) ESOL Skills for Life qualifications. These are operationally available for delivery 2014 to 2015.

2. This note sets out the funding arrangements for the new QCF ESOL Skills for Life qualifications and confirms that the Skills Funding Agency (the Agency) will stop funding the existing ESOL qualifications from 31 December 2014. However, continuing learners will be able to complete their existing qualifications.

1. Background and purpose

<http://tinyurl.com/lwpevxv>

You would expect to find 20 new QCF ESOL qualifications per awarding org, such as these for Ascentis

Learning aim	Learning aim title	Level
60143265	Award in ESOL Skills for Life (Reading) (Entry 1) (QCF)	E1
60142704	Award in ESOL Skills for Life (Reading) (Entry 2) (QCF)	E2
60142716	Award in ESOL Skills for Life (Reading) (Entry 3) (QCF)	E3
60143277	Award in ESOL Skills for Life (Writing) (Entry 1) (QCF)	E1
6014273X	Award in ESOL Skills for Life (Writing) (Entry 2) (QCF)	E2
60142741	Award in ESOL Skills for Life (Writing) (Entry 3) (QCF)	E3
60143253	Award in ESOL Skills for Life (Speaking and Listening) (Entry 1) (QCF)	E1
60142674	Award in ESOL Skills for Life (Speaking and Listening) (Entry 2) (QCF)	E2
60142686	Award in ESOL Skills for Life (Speaking and Listening) (Entry 3) (QCF)	E3
60142819	Award in ESOL Skills for Life (Reading) (QCF)	1
60142790	Award in ESOL Skills for Life (Writing) (QCF)	1
60142807	Award in ESOL Skills for Life (Speaking and Listening) (QCF)	1
60142728	Award in ESOL Skills for Life (Reading) (QCF)	2
60142753	Award in ESOL Skills for Life (Writing) (QCF)	2
60142698	Award in ESOL Skills for Life (Speaking and Listening) (QCF)	2
60143022	Certificate in ESOL Skills for Life (Entry 1) (QCF)	E1
6014080X	Certificate in ESOL Skills for Life (Entry 2) (QCF)	E2
60140811	Certificate in ESOL Skills for Life (Entry 3) (QCF)	E3
60140823	Certificate in ESOL Skills for Life (QCF)	1
60140835	Certificate in ESOL Skills for Life (QCF)	2

2. Funding Arrangements

<http://tinyurl.com/lwpevxv>

1. In the funding year 2014 to 2015, the Agency will fund new QCF ESOL in line with single rates as set out in the funding matrix.

Matrix funding band	Base rate
Awards (1 credit)	£50
Awards (2 credits)	£100
Awards (3-5 credits)	£150
Awards (6-8 credits)	£300
Awards (9-11 credits)	£450
Awards (12 credits)	£600
Certificate (13-24 credits)	£724
Certificate (25-36 credits)	£1,265
Diploma (37 to 48 credits)	£1,987
Diploma (49 to 72 credits)	£2,573
Diploma (73 to 132 credits)	£4,170
Diploma 133 credits or more)	£6,602

Ascentis | Cambridge | NOCN
Pearson/Edexcel | Trinity

← Reading (6 credits)

← Writing (9 credits)

← Speaking and listening (12 credits)

← Full certificate (27 credits)

2. Funding Arrangements

<http://tinyurl.com/lwpevxv>

1. In the funding year 2014 to 2015, the Agency will fund new QCF ESOL in line with single rates as set out in the funding matrix.

Learning aim	Learning aim title	Level	Credits	Rate
60143265	Award in ESOL Skills for Life (Reading) (Entry 1) (OCF)	E1	6	£300
60142704	Award in ESOL Skills for Life (Reading) (Entry 2) (OCF)	E2	6	£300
60142716	Award in ESOL Skills for Life (Reading) (Entry 3) (OCF)	E3	6	£300
60143277	Award in ESOL Skills for Life (Writing) (Entry 1) (OCF)	E1	9	£450
6014273X	Award in ESOL Skills for Life (Writing) (Entry 2) (OCF)	E2	9	£450
60142741	Award in ESOL Skills for Life (Writing) (Entry 3) (OCF)	E3	9	£450
60143253	Award in ESOL Skills for Life (Speaking and Listening) (Entry 1) (OCF)	E1	12	£600
60142674	Award in ESOL Skills for Life (Speaking and Listening) (Entry 2) (OCF)	E2	12	£600
60142686	Award in ESOL Skills for Life (Speaking and Listening) (Entry 3) (OCF)	E3	12	£600
60142819	Award in ESOL Skills for Life (Reading) (OCF)	1	6	£300
60142790	Award in ESOL Skills for Life (Writing) (OCF)	1	9	£450
60142807	Award in ESOL Skills for Life (Speaking and Listening) (OCF)	1	12	£600
60142728	Award in ESOL Skills for Life (Reading) (OCF)	2	6	£300
60142753	Award in ESOL Skills for Life (Writing) (OCF)	2	9	£450
60142698	Award in ESOL Skills for Life (Speaking and Listening) (OCF)	2	12	£600
60143022	Certificate in ESOL Skills for Life (Entry 1) (OCF)	E1	27	£1,265
6014080X	Certificate in ESOL Skills for Life (Entry 2) (OCF)	E2	27	£1,265
60140811	Certificate in ESOL Skills for Life (Entry 3) (OCF)	E3	27	£1,265
60140823	Certificate in ESOL Skills for Life (OCF)	1	27	£1,265
60140835	Certificate in ESOL Skills for Life (OCF)	2	27	£1,265

2. Funding Arrangements

<http://tinyurl.com/lwpevxv>

1. In the funding year 2014 to 2015, the Agency will fund new QCF ESOL in line with single rates as set out in the funding matrix.

Matrix funding band	Base rate
Awards (1 credit)	£50
Awards (2 credits)	£100
Awards (3-5 credits)	£150
Awards (6-8 credits)	£300
Awards (9-11 credits)	£450
Awards (12 credits)	£600
Certificate (13-24 credits)	£724
Certificate (25-36 credits)	£1,265
Diploma (37 to 48 credits)	£1,987
Diploma (49 to 72 credits)	£2,573
Diploma (73 to 132 credits)	£4,170
Diploma (133 credits or more)	£6,602

City and Guilds

Reading E1-E3 (9 credits) L1-L2 (11 credits)
 Writing E1-E2 (9 credits) E3-L2 (11 credits)
 Speaking and listening E1-E2 (11 credits)
 Speaking and listening E3-L2 (12 credits)
 Full certificate E1-L2 (29, 32 or 34 credits)

BUT...

The new full QCF ESOL certificate has a funding rate of just £1,265.
 If you delivered this 450 hours when loadbanded in 2012/13 the rate would have been £2,615

$£2,615 / 450 \text{ hours} = £5.81 \text{ per hour in 2012/13}$

So to earn the £5.81 rate you would only need to deliver
 $£1,265 / 5.81 = 218 \text{ hours}$

Matrix rate	Hours (at 2012/13 £5.81 per hour)
£300	52
£450	77
£600	103
£1,265	218

SFA challenge...how to pay providers more for the new qualifications when they are delivered over a long duration?

SFA solution...

2. Funding Arrangements

<http://tinyurl.com/lwpevxv>

1. In addition to these [matrix] rates, colleges and training organisations (providers) offering these new qualifications can claim additional funding using the 'non-regulated' funding mechanism to take account of any shortfall in funding resulting from the rates matrix. This means that for learners undertaking their QCF ESOL qualification, where single rates do not provide enough funding to cover costs, the provider can add to this using the 'non-regulated' mechanism.

SFA solution...

2. Funding Arrangements

<http://tinyurl.com/lwpevxv>

2. You can record the additional funding using 'learning aim class codes' and as such we will fund it using providers' planned guided learning hours. This is the same approach used for non-regulated ESOL provision and is explained in the Funding Rates 2014 to 2015 and Appendix H of the Individualised Learner Record (ILR) specification. Learning support is also available for ESOL learners where required, in accordance with our Funding Rules.

3. We have agreed this approach following consultation with the Agency's Funding External Technical Advisory Group (FETAG) and it is intended to reflect the diverse nature of the ESOL learner intake. It retains the use of the matrix but enables 'top-up' where necessary, and only for those learners where the single rate is insufficient to complete their QCF ESOL qualification.

SFA solution...

2. Funding Arrangements

<http://tinyurl.com/lwpevxv>

4. These 'top up' arrangements do not apply to learners whose main learning aim is non-regulated provision.

5. The new QCF ESOL qualifications will be approved automatically for delivery and included in the Simplified Funding Rates Catalogue, due for publication in November 2014. They will also appear on the Learning Aims Search Facility in the Hub two to three weeks after publication of the Catalogue. Qualifications will be backdated to their operational start date.

Non-regulated ESOL learning aims

Entry Level

Learning Aim	Title	Hour Value	Funding Rate £
Z0004306	Non regulated SFA formula funded provision, Entry Level, ESOL, Up to 12 hrs	Up to 12	£50
Z0004307	Non regulated SFA formula funded provision, Entry Level, ESOL, 13 to 20 hrs	13 to 20	£100
Z0004308	Non regulated SFA formula funded provision, Entry Level, ESOL, 21 to 44 hrs	21 to 44	£150
Z0004309	Non regulated SFA formula funded provision, Entry Level, ESOL, 45 to 68 hrs	45 to 68	£300
Z0004310	Non regulated SFA formula funded provision, Entry Level, ESOL, 69 to 92 hrs	69 to 92	£450
Z0004311	Non regulated SFA formula funded provision, Entry Level, ESOL, 93 to 100 hrs	93 to 100	£600
Z0004312	Non regulated SFA formula funded provision, Entry Level, ESOL, 101 to 196 hrs	101 to 196	£724
Z0004313	Non regulated SFA formula funded provision, Entry Level, ESOL, 197 to 292 hrs	197 to 292	£1,265
Z0004314	Non regulated SFA formula funded provision, Entry Level, ESOL, 293 to 388 hrs	293 to 388	£1,987
Z0004315	Non regulated SFA formula funded provision, Entry Level, ESOL, 389 to 580 hrs	389 to 580	£2,573
Z0004316	Non regulated SFA formula funded provision, Entry Level, ESOL, 581 to 1060 hrs	581 to 1060	£4,170
Z0004317	Non regulated SFA formula funded provision, Entry Level, ESOL, 1061 + hrs	1061 +	£6,602

Non-regulated ESOL learning aims

Level 1

Learning Aim	Title	Hour Value	Funding Rate £
Z0004318	Non regulated SFA formula funded provision, Level 1, ESOL, Up to 12 hrs	Up to 12	£50
Z0004319	Non regulated SFA formula funded provision, Level 1, ESOL, 13 to 20 hrs	13 to 20	£100
Z0004320	Non regulated SFA formula funded provision, Level 1, ESOL, 21 to 44 hrs	21 to 44	£150
Z0004321	Non regulated SFA formula funded provision, Level 1, ESOL, 45 to 68 hrs	45 to 68	£300
Z0004322	Non regulated SFA formula funded provision, Level 1, ESOL, 69 to 92 hrs	69 to 92	£450
Z0004323	Non regulated SFA formula funded provision, Level 1, ESOL, 93 to 100 hrs	93 to 100	£600
Z0004324	Non regulated SFA formula funded provision, Level 1, ESOL, 101 to 196 hrs	101 to 196	£724
Z0004325	Non regulated SFA formula funded provision, Level 1, ESOL, 197 to 292 hrs	197 to 292	£1,265
Z0004326	Non regulated SFA formula funded provision, Level 1, ESOL, 293 to 388 hrs	293 to 388	£1,987
Z0004327	Non regulated SFA formula funded provision, Level 1, ESOL, 389 to 580 hrs	389 to 580	£2,573
Z0004328	Non regulated SFA formula funded provision, Level 1, ESOL, 581 to 1060 hrs	581 to 1060	£4,170
Z0004329	Non regulated SFA formula funded provision, Level 1, ESOL, 1061 + hrs	1061 +	£6,602

Non-regulated ESOL learning aims

Level 2

Learning Aim	Title	Hour Value	Funding Rate £
Z0004330	Non regulated SFA formula funded provision, Level 2, ESOL, Up to 12 hrs	Up to 12	£50
Z0004331	Non regulated SFA formula funded provision, Level 2, ESOL, 13 to 20 hrs	13 to 20	£100
Z0004332	Non regulated SFA formula funded provision, Level 2, ESOL, 21 to 44 hrs	21 to 44	£150
Z0004333	Non regulated SFA formula funded provision, Level 2, ESOL, 45 to 68 hrs	45 to 68	£300
Z0004334	Non regulated SFA formula funded provision, Level 2, ESOL, 69 to 92 hrs	69 to 92	£450
Z0004335	Non regulated SFA formula funded provision, Level 2, ESOL, 93 to 100 hrs	93 to 100	£600
Z0004336	Non regulated SFA formula funded provision, Level 2, ESOL, 101 to 196 hrs	101 to 196	£724
Z0004337	Non regulated SFA formula funded provision, Level 2, ESOL, 197 to 292 hrs	197 to 292	£1,265
Z0004338	Non regulated SFA formula funded provision, Level 2, ESOL, 293 to 388 hrs	293 to 388	£1,987
Z0004339	Non regulated SFA formula funded provision, Level 2, ESOL, 389 to 580 hrs	389 to 580	£2,573
Z0004340	Non regulated SFA formula funded provision, Level 2, ESOL, 581 to 1060 hrs	581 to 1060	£4,170
Z0004341	Non regulated SFA formula funded provision, Level 2, ESOL, 1061 + hrs	1061 +	£6,602

Topping up example 1

Learning aim	Title	Level	Matrix rate
60140823	Certificate in ESOL Skills for Life (QCF)	1	£1,265

Matrix rate £1,265 / £5.81 = 218 hours

Provider plans = 450 hours

Amount of topping up needed = 232 hours

Learning aim	Qualification and top-up	Matrix rate
60140823	Certificate in ESOL Skills for Life (QCF)	£1,265
Z0004325	Non regulated SFA formula funded provision, Level 1, ESOL, 197 to 292 hrs	£1,265
		<u>£2,530</u>

Topping up example 2

Learning aim	Title	Level	Matrix rate
60140823	Certificate in ESOL Skills for Life (QCF)	1	£1,265

Matrix rate £1,265 / £5.81 = 218 hours

Provider plans = 400 hours

Amount of topping up needed = 182 hours

Learning aim	Qualification and top-up	Matrix rate
60140823	Certificate in ESOL Skills for Life (QCF)	£1,265
Z0004324	Non regulated SFA formula funded provision, Level 1, ESOL, 101 to 196 hrs	£724
		<u>£1,989</u>

Topping up example 3

Learning aim	Title	Matrix rate
60142704	Award in ESOL Skills for Life (Reading) (Entry 2) (QCF)	£300

Matrix rate £300 / £5.81 = 52 hours

Provider plans = 120 hours

Amount of topping up needed = 68 hours

Learning aim	Qualification and top-up	Matrix rate
60140823	Certificate in ESOL Skills for Life (QCF)	£300
Z0004309	Non regulated SFA formula funded provision, Entry Level, ESOL, 45 to 68 hrs	£300
		£600

But plan an extra hour (121 total = 69 hours topping up) and funding would rise by £150 per enrolment (same as extra £3k for an hour with a group of 20!)

Learning aim	Qualification and top-up	Matrix rate
60140823	Certificate in ESOL Skills for Life (QCF)	£300
Z0004310	Non regulated SFA formula funded provision, Entry Level, ESOL, 69 to 92 hrs	£450
		£750

Implications for data recording (the ILR)



Where topping up is used **There should be one non-regulated learning aim recorded for each separate QCF ESOL qualification**

For topping up, the non-regulated learning aim needs "code LDM336 in the Learning delivery funding and monitoring fields of the ILR against each non-regulated learning aim" This will exclude them from success rates

For topping up, "the learning start, planned and actual end dates must be concurrent with the regulated learning"

"Record the same outcome on the non-regulated learning aim as the regulated learning aim. In other words, an outcome of achieved must only be recorded on the non-regulated aim if the ESOL qualification is achieved. The same actual end date as the ESOL qualification should be recorded. Our usual earnings method applies and we will pay 20% of the non-regulated learning aim on achievement."

https://www.gov.uk/government/uploads/system/uploads/attachment_data/file/375105/ESOL_S4L_Technical_Guidance_Note_31Oct2014_v8.pdf



19+ funding formula and rules (per enrolment funding)

Funding Rules 2014 to 2015
Version 2
This document sets out the rules for funding and associated evidence needed for the funding year 2014 to 2015. These rules will apply from 1 August 2014.
This puts the rules for funding in one place and combines the evidence needed to support them.
May 2014
European Union
European Social Fund
Investment for Growth and Jobs

The Skills Funding Agency's funding rates and formula
Version 2
This document sets out the details of the 2014 to 2015 funding system used to fund provision paid for from the Adult Skills Budget (ASB), as well as the funding of 16 to 18 apprenticeships. The funding system is also used to fund Ofsted Learning and Skills Service (OLSS) and is used to work out funding for the Loans Summary.
October 2014
Of interest to further education and skills training providers

<http://tinyurl.com/p5zzagw> <http://tinyurl.com/odftjf9>

BR

X

PW

X

DU

X

ACU

X

Discounts

=

Base rateProgramme WeightingDisadvantage upliftArea cost upliftdiscountsFunding

New 'matrix' funding rates

Adult Skills Budget learners (including apprenticeships and traineeships) are funded on an in-year per enrolment basis with rates from the new QCF based matrix:

Funding band	Base rate (1 PW)	Low rate (1.12 PW)	Medium rate (1.3 PW)	High rate (1.6 PW)	Specialist rate (1.72 or 1.92 PW)
Awards (1 credit)	£50	£56	£65	£80	£86 or £96
Awards (2 credits)	£100	£112	£130	£160	£172 or £192
Awards (3-5 credits)	£150	£168	£195	£240	£258 or £288
Awards (6-8 credits)	£300	£336	£390	£480	£516 or £576
Awards (9-11 credits)	£450	£504	£585	£720	£774 or £864
Awards (12 credits)	£600	£672	£780	£960	£1,032 or £1,152
Certificate (13-24 credits)	£724*	£811	£941	£1,159	£1,246 or £1,390
Certificate (25-36 credits)	£1,265	£1,417	£1,645	£2,025	£2,176 or £2,428
Diploma (37 to 48 credits)	£1,987	£2,225	£2,583	£3,179	£3,417 or £3,815
Diploma (49 to 72 credits)	£2,573	£2,882	£3,345	£4,117	£4,425 or £4,940
Diploma (73 to 132 credits)	£4,170	£4,670	£5,421	£6,671	£7,172 or £8,006
Diploma 133 credits or more)	£6,602	£7,395	£8,583	£10,564	£11,356 or £12,675

* Rate for Functional Skills Eng and Math and GCSEs is £724

Co-funding

Co-funded non-apprenticeship qualification (unweighted)

$$\left(\text{BR} \times \text{PW} \times \text{DU} \times \text{ACU} \right) - \left(\text{BR} \times 0.5 \right) = \text{Stack of coins}$$

Co-funded apprenticeship qualification (weighted)

$$\text{BR} \times \text{PW} \times \text{DU} \times \text{ACU} \times 0.5 = \text{Stack of coins}$$

SFA payments

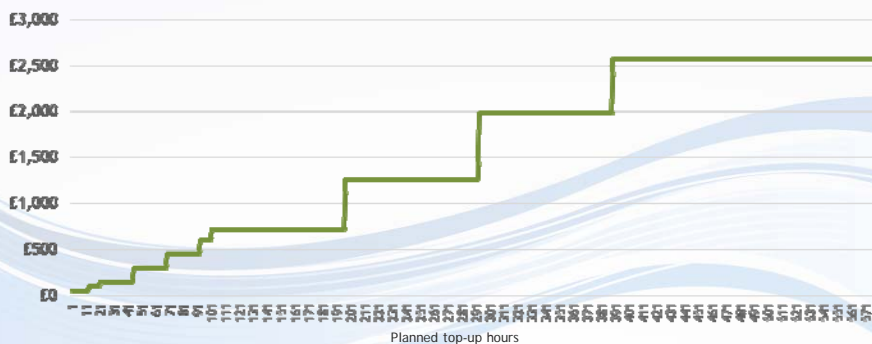
Payments are based on ILR data returns, with monthly on-programme instalments (80%) and an achievement payment (20%)

Monthly on-programme (OP) instalment funding includes a double payment in month one (sometimes referred to as n+1). For example, if OP was £10,000 over 9 months then month one would be £2,000 and following 8 months would be £1,000 each

Assuming a learner passes the qualifying period but withdraws during the course, the last OP instalment would be the month before they dropped-out

There is a potential 'job outcome payment' of half the achievement payment for eligible non-achieved learners

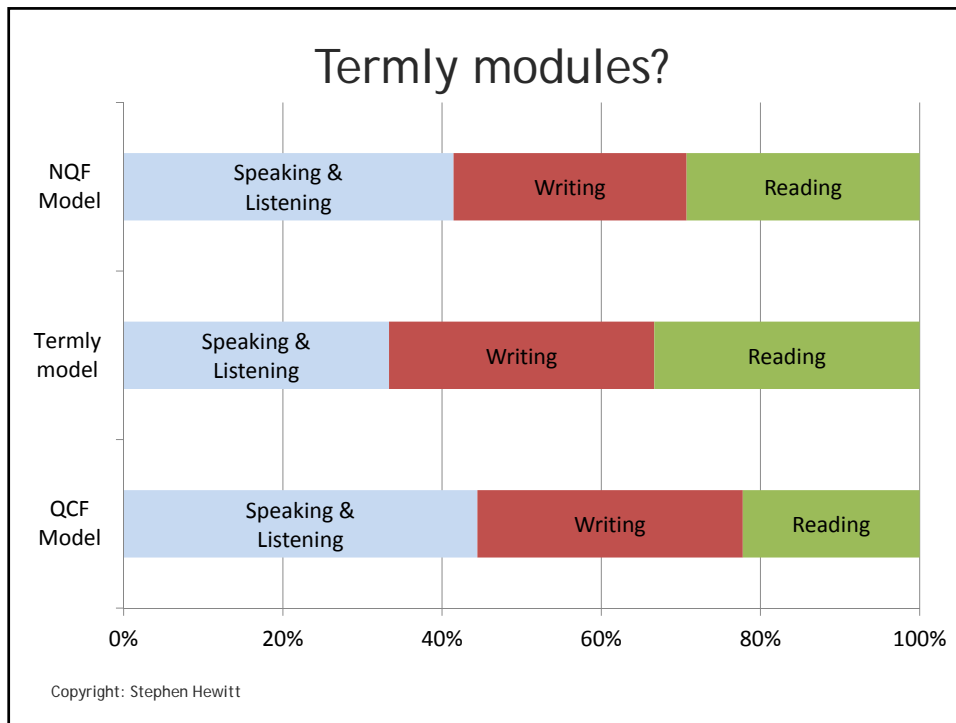
The topping up value graph and efficiencies



Planned hours	Rate
Up to 12	£50
13 to 20	£100
21 to 44	£150
45 to 68	£300
69 to 92	£450
93 to 100	£600
101 to 196	£724
197 to 292	£1,265
293 to 388	£1,987
389 to 580	£2,573

Most efficient top-up	
Topping up hours	Rate per hour
1	£50
13	£8
21	£7
45	£7
69	£7
93	£6
101	£7
197	£6
293	£7
389	£7

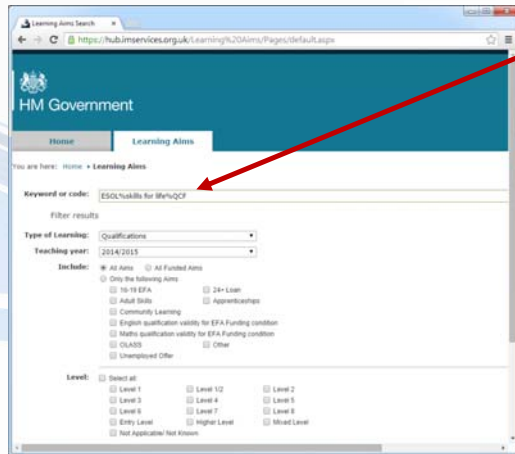
Least efficient top-up	
Topping up hours	Rate per hour
12	£4
20	£5
44	£3
68	£4
92	£5
100	£6
196	£4
292	£4
388	£5
580	£4



Top tips for ESOL when using the SFA catalogue, LARS, FIS, HUB and DSATs

Lsect
Learning & skills ~ events, consultancy and training

Tips for finding the new QCF ESOL qualifications on the Learning Aims Search Facility



ESOL%skills for life%QCF

Currently there are 102 QCF ESOL learning aim on LARS (20 from Ascentis, NOCN, Cambridge Pearson/Edexcel and C&G), and 2 from Trinity but without funding rates

You are likely to find them appear first on <http://register.ofqual.gov.uk/>

Expect updates middle of the month (around two weeks after SFA catalogue updated)

<https://hub.imservices.org.uk/Learning%20Aims/Pages/default.aspx>

SFA catalogue (as at 3rd November. Next update due 1 December)

Currently there are 100 QCF ESOL learning aim on the SFA catalogue (20 from Ascentis, NOCN, Cambridge, Pearson/Edexcel and C&G)

Learning Aim Reference	Qualification Title	Credit	Weighted Funding Rate	Programme Weighting	Comments	Date Added to Catalogue	
1534	60143265	Ascentis Entry Level Award in ESOL Skills for Life (Reading) (Entry 1) (QCF)	6	£300	A	QCF English for Speakers of Other Languages	03-11-14
1535	60142704	Ascentis Entry Level Award in ESOL Skills for Life (Reading) (Entry 2) (QCF)	6	£300	A	QCF English for Speakers of Other Languages	03-11-14
1536	60142716	Ascentis Entry Level Award in ESOL Skills for Life (Reading) (Entry 3) (QCF)	6	£300	A	QCF English for Speakers of Other Languages	03-11-14
1537	60143263	Ascentis Entry Level Award in ESOL Skills for Life (Speaking and Listening) (Entry 1) (QCF)	12	£600	A	QCF English for Speakers of Other Languages	03-11-14
1538	60142674	Ascentis Entry Level Award in ESOL Skills for Life (Speaking and Listening) (Entry 2) (QCF)	12	£600	A	QCF English for Speakers of Other Languages	03-11-14
1539	60142686	Ascentis Entry Level Award in ESOL Skills for Life (Speaking and Listening) (Entry 3) (QCF)	12	£600	A	QCF English for Speakers of Other Languages	03-11-14
1540	60143277	Ascentis Entry Level Award in ESOL Skills for Life (Writing) (Entry 1) (QCF)	9	£450	A	QCF English for Speakers of Other Languages	03-11-14
1541	6014273X	Ascentis Entry Level Award in ESOL Skills for Life (Writing) (Entry 2) (QCF)	9	£450	A	QCF English for Speakers of Other Languages	03-11-14
		Ascentis Entry Level Award in ESOL Skills for Life (Writing)				QCF English for Speakers of Other Languages	

£ rate

Category (in the comments column)

When the rate was added to the catalogue

<https://www.gov.uk/government/publications/qualifications-simplified-funding-rates-2014-to-2015>

Funding rates on LARS

e.g. 60143265 learning aim

Funding section

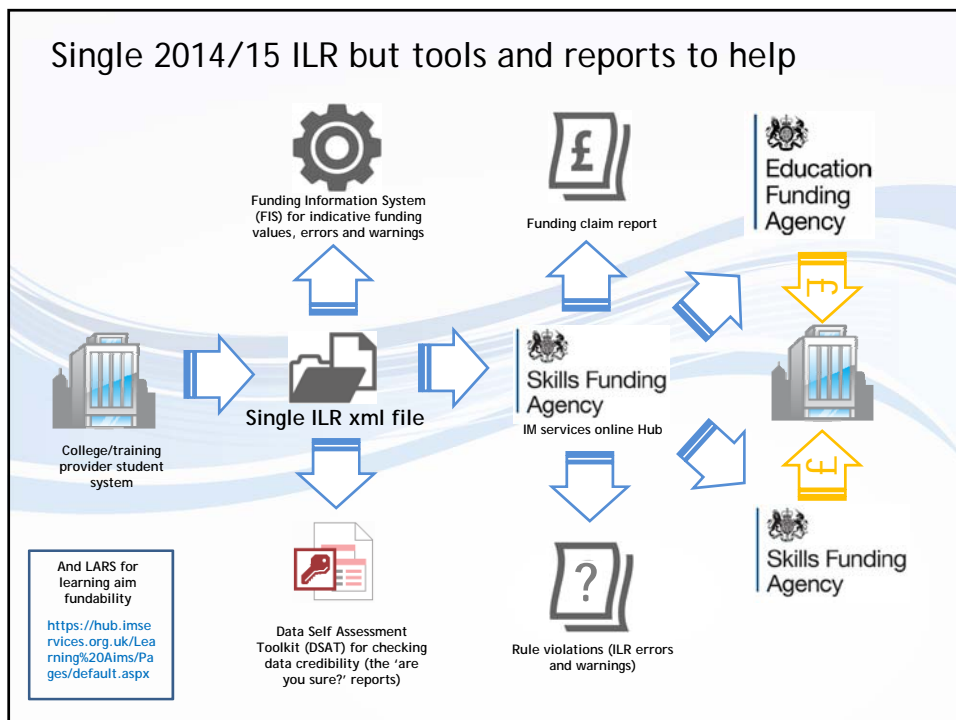
Adult Skills section

£300

Valid dates

<https://hub.imservices.org.uk/Learning%20Aims/Pages/default.aspx>

Single 2014/15 ILR but tools and reports to help



Use FIS - but rely on the hub for final checks



PDSAT

“FE providers funded by the Education Funding Agency (EFA) must use PDSAT during the funding year.”

<https://www.gov.uk/government/publications/ilr-data-check-that-it-meets-standards-and-quality-requirements>

Provider data self assessment toolkit (PDSAT): version 15

PDSAT version 15 is for analysing learner and learning data from the 2014 to 2015 funding year. It interrogates Individualised Learner Record (ILR) data directly and produces reports on this data, so that providers can identify and investigate potential anomalies in the ILR data.

PDSAT version 15 will only process 2014 to 2015 ILR data for full returns. It has been designed to:

- give providers a toolkit to analyse ILR data
- assist auditors in the audit of FE providers' ILR data for 2014 to 2015

We do not require FE providers to use PDSAT, although you may find it useful in your routine data cleansing and helpful when preparing for assurance visits.

PDSAT version 15 has been designed to process data that has been validated through the FIS. It is recommended that all ILR errors and warnings are reviewed and corrected before the ILR file is processed in PDSAT.

Unlike the previous year, **PDSAT version 15 will use the ILR XML data file** which does not contain any funding. The reports run from PDSAT will instead provide an indication whether funding could be expected, under column headers "Funding Flag (SFA)" or "Funding Flag (EFA)" where applicable. Please be aware that this is an indication for funding only and may not always match with funding shown through FIS. In addition, any non-validated records will also appear in the reports and funding may be incorrectly indicated for these records.

An update to allow PDSAT to accept the FIS input (Access database) is expected to be released in December 2014.

PDSAT

Particularly useful ESOL 'are you sure'?

Return Selected:

Favourite Group: All SFA Reports

Report ID	Report Title	Current Load	Outputted	Select
15S-070	Learners under 16		<input type="checkbox"/>	<input type="checkbox"/>
15S-080	Apprentices with prior attainment at level 4 and above		<input type="checkbox"/>	<input type="checkbox"/>
15S-090	16-18 learners with co-funding		<input type="checkbox"/>	<input type="checkbox"/>
15S-100	19+ learners with full funding claimed		<input type="checkbox"/>	<input type="checkbox"/>
15S-110	19+ learners with enhanced funding		<input type="checkbox"/>	<input type="checkbox"/>
15S-120	Adult learners under 19		<input type="checkbox"/>	<input type="checkbox"/>
15S-130	16-18 Apprenticeships minimum duration exceptions		<input type="checkbox"/>	<input type="checkbox"/>
15S-140	19+ Apprenticeships minimum duration exceptions		<input type="checkbox"/>	<input type="checkbox"/>
15S-150	Prior attainment		<input type="checkbox"/>	<input type="checkbox"/>
15S-240	Withdrawals on short and long programmes		<input type="checkbox"/>	<input type="checkbox"/>
15S-250	Learners in learning beyond their learning planned end date		<input type="checkbox"/>	<input type="checkbox"/>
15S-260	Learning actual end dates		<input type="checkbox"/>	<input type="checkbox"/>
15S-270	Transferring learners		<input type="checkbox"/>	<input type="checkbox"/>
15S-280	Resuming learners		<input type="checkbox"/>	<input type="checkbox"/>
15S-290	Apprenticeship achievers		<input type="checkbox"/>	<input type="checkbox"/>
15S-300	Early completions		<input type="checkbox"/>	<input type="checkbox"/>
15S-310	Completions with unknown outcomes		<input type="checkbox"/>	<input type="checkbox"/>

Run Selected Reports

More if you scroll down plus 3 joint reports

Select All Deselect All

Report ID	Report Title
15B-010	Report logic by report
15B-050	Possible duplicate learners
15B-060	Possible duplicate or overlapping learning aims

Report with the DSAT reports is useful

Q&A session with awarding organisations

Paul Sceeny, City and Guilds
Henry Tolley, Trinity
Dawn Smith, Ascentis
Lee Knapp, Cambridge Assessment
Helen Georgiou, NOCN
Rebecca Brackley, Pearson/Edexcel

Lsect
 Learning & skills ~ events,
 consultancy and training

Q&A with awarding organisations

1. What are the main changes to the qualifications?
2. When will the new qualifications be ready for tutors/managers to have a look at? Will any training for tutors be available and if so when?
3. Why did City and Guilds develop difference sizes?
4. How do 'spikey profiles' work with the new ESOL qualifications
5. Can the non-QCF modes achieved be mixed with the new QCF modes to achieve the full-mode QCF certificate?
6. Can providers mix awarding bodies and still achieve the full-mode certificate?

Final Q&A

Latest training events at www.lsect.com

Subscribe to FE Week at www.feweek.co.uk

Lsect
Learning & skills ~ events,
consultancy and training